

1
2
3
4
5
6
7
8
9
10
11
12
13
14
15
16
17
18
19
20
21
22
23
24
25
26
27
28
29
30
31
32
33

AN ORDINANCE changing the boundary of the Sewer Local Service Area on Vashon Island due to a documented public health hazard and amending Ordinance 5522 Appendix A and the King County General Sewerage Plan (Ordinance 4035).

PREAMBLE:

For the purpose of effective planning and regulations, the King County Council makes the following findings:

1. The Island Manor Nursing Home, located outside of the Sewer Local Service Area on Vashon Island, is creating a public health hazard due to drainfield failures.
2. The Seattle-King County Department of Public Health verifies this public health hazard and further states that the only remedy is the installation of sanitary sewers.
3. The King County Sewerage General Plan requires the local sewer agency to demonstrate an existing or potential health hazard and that alternative methods of sewage disposal are financially or technically infeasible.
4. The Vashon Sewer District does substantiate the public health hazard and the necessity to provide sewer service to the area.
5. The Board of Commissioners of the Vashon Sewer District passed Resolution 223 which indicates the district's willingness and ability to provide the sewer service.

BE IT ORDAINED BY THE COUNCIL OF KING COUNTY:

SECTION 1. Ordinance 5522, Appendix A is hereby amended.

The Sewer Local Service Area boundary is changed to include the property depicted on Attachment A.

SECTION 2. Ordinance No. 4035 previously adopting the King County Sewerage General Plan is hereby amended pursuant to the depiction on Attachment A.

INTRODUCED AND READ for the first time this 10th day of December, 1984.

PASSED this 7th day of January, 1985

KING COUNTY COUNCIL
KING COUNTY, WASHINGTON

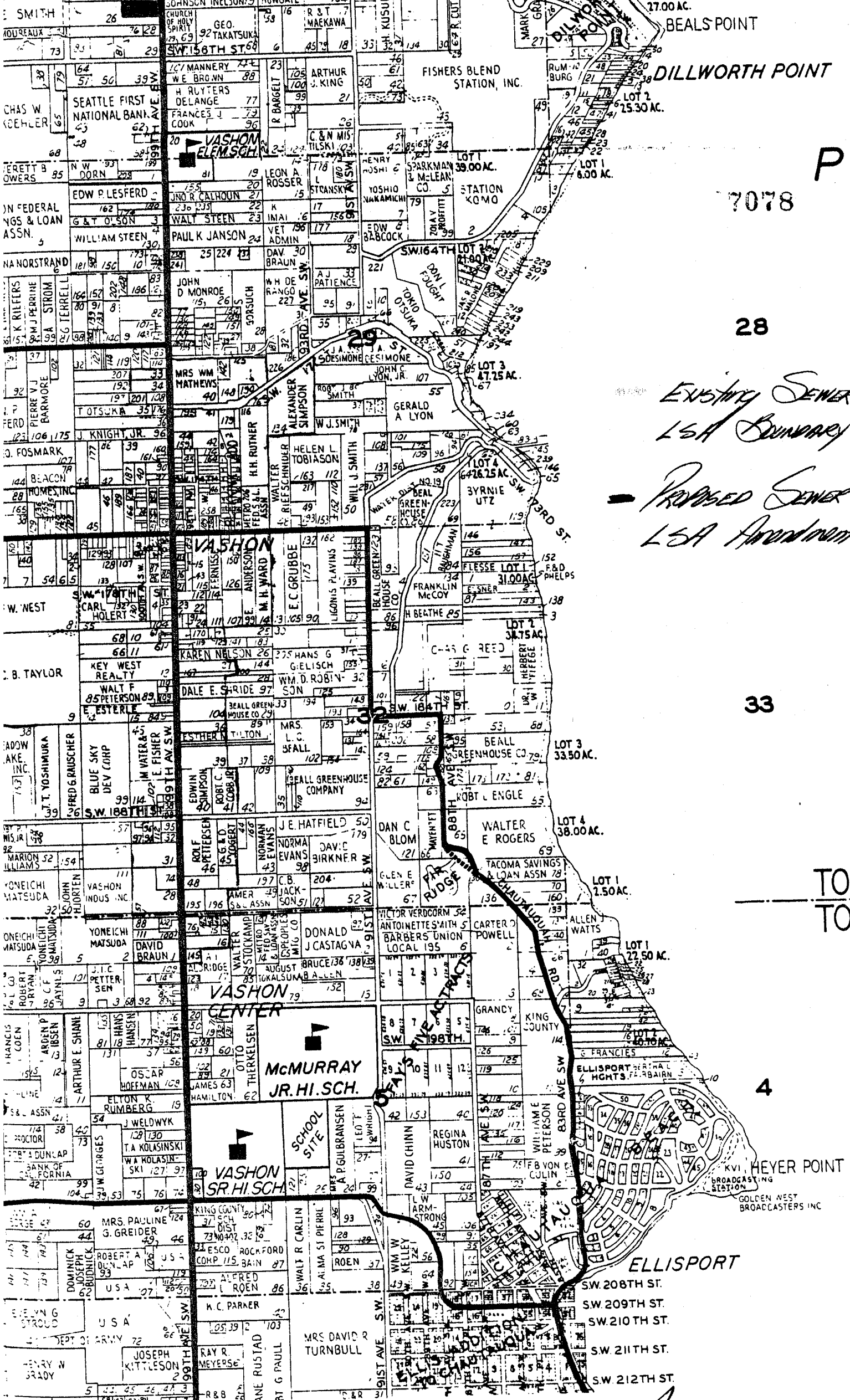
Gary Grant
Chairman

ATTEST:

Quincy M. Owens
Clerk of the Council

APPROVED this 18th day of January, 1985

Randy R. Walker
King County Executive



P

7078

28

EXISTING SEWER
LSA BOUNDARY

PROPOSED SEWER
LSA APPROPRIATION

33

TOWN
TOWN

4

ATTACHMENT A